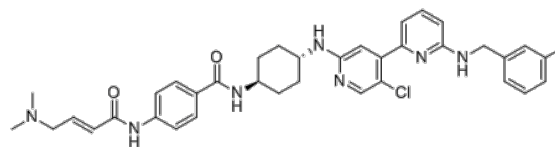


**Product Name** : XPW1  
**Cat. No.** : PC-21681  
**CAS No.** : 2700286-66-2  
**Molecular Formula** : C<sub>36</sub>H<sub>39</sub>ClFN<sub>7</sub>O<sub>2</sub>  
**Molecular Weight** : 656.20  
**Target** : Cyclin-dependent Kinase (CDK)  
**Solubility** : 10 mM in DMSO



CAS: 2700286-66-2

### Biological Activity

XPW1 is a potent and selective **CDK9** inhibitor with excellent anti-ccRCC activity and low toxicity.

### References

Zhijian Kuang, et al. *Br J Cancer*. 2023 Dec;129(12):1915-1929.

**Caution: Product has not been fully validated for medical applications. Lab Use Only!**

E-mail: tech@probechem.com